

A profile of Fishing Activity in Roaringwater Bay
(November 2010)

Bord Iascaigh Mhara (BIM) and the Marine Institute (MI)

The information requested in this questionnaire is to enable an appropriate assessment of the impact of fishing activity on habitats and species within the Bay that are designated under the Habitats Directive to be undertaken. This assessment will also include the activity of aquaculture.

The process involved in this assessment and in licencing activity within Natura sites was explained at a public meeting in Skibereen on November 11th 2010.

The information is anonymous

The information will not be used to identify individual entitlements to fishing licences in Roaringwater Bay.

| VESSEL and CREW | |
|--|--|
| Home port | |
| Vessel registration number | |
| Vessel type (open, half deck, decked etc) | |
| Vessel Length | |
| Vessel GTs and KWs | |
| Plotter installed ? | |
| Sounder installed ? | |
| In what year was the vessel built? | |
| What is the replacement cost of the vessel (excluding the capacity)? | |
| Crew number (inclusive of the skipper) | |
| Nationality of crew | |
| Are you a member of a PO or other representative organisation ? | |
| Main target species (in order of importance) | |

Note: to provide information on economic and social (direct employment) importance

GEAR: Specify amount in each month

| Gear | Target species | Jan | Feb | Mar | Apr | May | Jun | Jul | Aug | Sept | Oct | Nov | Dec |
|------------------------|--------------------------|-----|-----|-----|-----|-----|-----|-----|-----|------|-----|-----|-----|
| MOBILE | | | | | | | | | | | | | |
| Fixed tooth dredge | scallop | | | | | | | | | | | | |
| Oyster dredge | oyster | | | | | | | | | | | | |
| Hydraulic dredge | | | | | | | | | | | | | |
| Bottom otter trawl | Mixed demersal | | | | | | | | | | | | |
| Single mid-water trawl | Herring, sprat, mackerel | | | | | | | | | | | | |
| Pair mid-water trawl | Herring, sprat, mackerel | | | | | | | | | | | | |
| STATIC | | | | | | | | | | | | | |
| Set Gill Nets | Pollack | | | | | | | | | | | | |
| Tangle Nets | Crayfish | | | | | | | | | | | | |
| Trammel Nets | Bait | | | | | | | | | | | | |
| Shrimp Pots | shrimp | | | | | | | | | | | | |
| Soft eye creels | Crab, Lobster | | | | | | | | | | | | |
| Top entrance pots | Crab, Lobster | | | | | | | | | | | | |
| HOOKS and LINES | | | | | | | | | | | | | |
| Mechanised Jiggers | | | | | | | | | | | | | |
| Demersal Long Lines | | | | | | | | | | | | | |
| Drifting Longlines | | | | | | | | | | | | | |
| Trolling Lines | | | | | | | | | | | | | |
| LAND BASED | | | | | | | | | | | | | |
| Hand Gathering | | | | | | | | | | | | | |
| Digging / Raking | | | | | | | | | | | | | |

Note: The monthly distribution of gear activity is relevant to the persistence of pressure applied to a Habitat and therefore the persistence of disturbance if the gear causes disturbance of habitat.

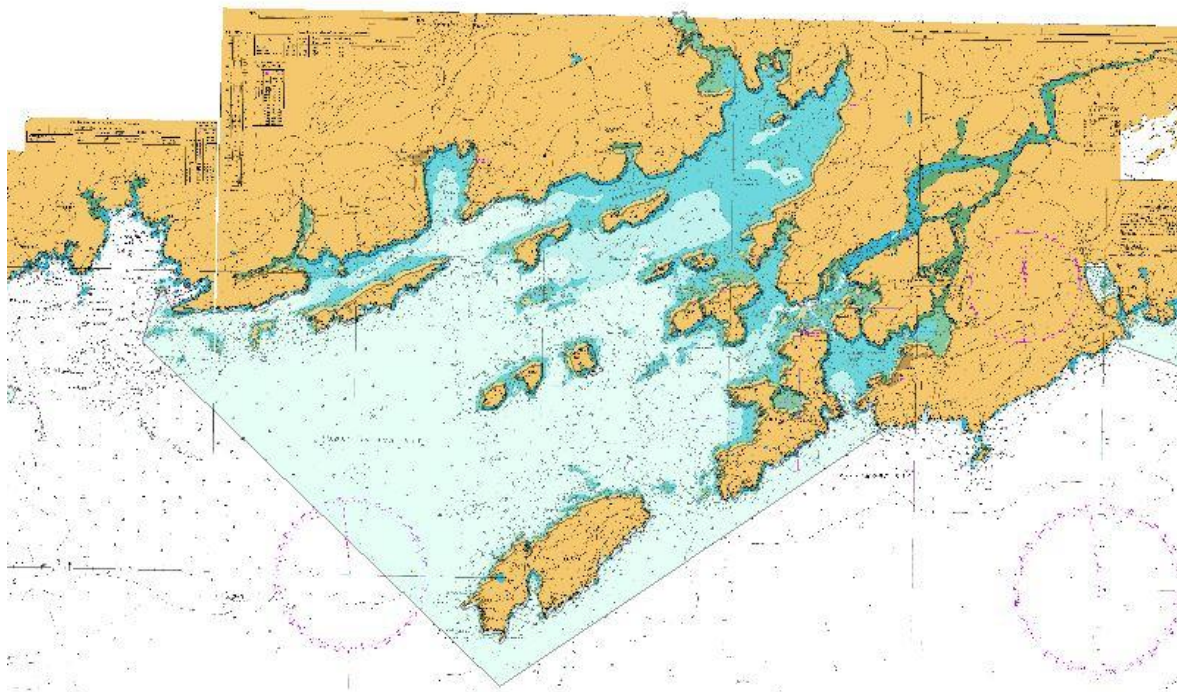
At least the months where the gear is active and inactive should be identifiable. For months where the gear is active be categorical (low, medium or high relatively other months) or ideally quantitative (pots used, miles of nets, number of nets)

GEAR: Specify days during which gear is in the water in each month

| Gear | Target species | Jan | Feb | Mar | Apr | May | Jun | Jul | Aug | Sept | Oct | Nov | Dec |
|------------------------|--------------------------|-----|-----|-----|-----|-----|-----|-----|-----|------|-----|-----|-----|
| MOBILE GEAR | | | | | | | | | | | | | |
| Fixed tooth dredge | scallop | | | | | | | | | | | | |
| Oyster dredge | oyster | | | | | | | | | | | | |
| Hydraulic dredge | | | | | | | | | | | | | |
| Bottom otter trawl | Mixed demersal | | | | | | | | | | | | |
| Single mid-water trawl | Herring, sprat, mackerel | | | | | | | | | | | | |
| Pair mid-water trawl | Herring, sprat, mackerel | | | | | | | | | | | | |
| STATIC GEAR | | | | | | | | | | | | | |
| Set Gill Nets | Pollack | | | | | | | | | | | | |
| Tangle Nets | Crayfish | | | | | | | | | | | | |
| Trammel Nets | Bait | | | | | | | | | | | | |
| Shrimp Pots | shrimp | | | | | | | | | | | | |
| Soft eye creels | Crab, Lobster | | | | | | | | | | | | |
| Top entrance pots | Crab, Lobster | | | | | | | | | | | | |
| HOOKS and LINES | | | | | | | | | | | | | |
| Mechanised Jiggers | | | | | | | | | | | | | |
| Demersal Long Lines | | | | | | | | | | | | | |
| Drifting Longlines | | | | | | | | | | | | | |
| Trolling Lines | | | | | | | | | | | | | |
| LAND BASED | | | | | | | | | | | | | |
| Hand Gathering | | | | | | | | | | | | | |
| Digging / Raking | | | | | | | | | | | | | |

Note: The fishing pressure for a gear in any month is the product of the amount of gear and number of days the gear is in the water during that month. For months where the gear is used get an estimate of the number of days the gear is in the water which for static gear is higher than the number of fishing days.

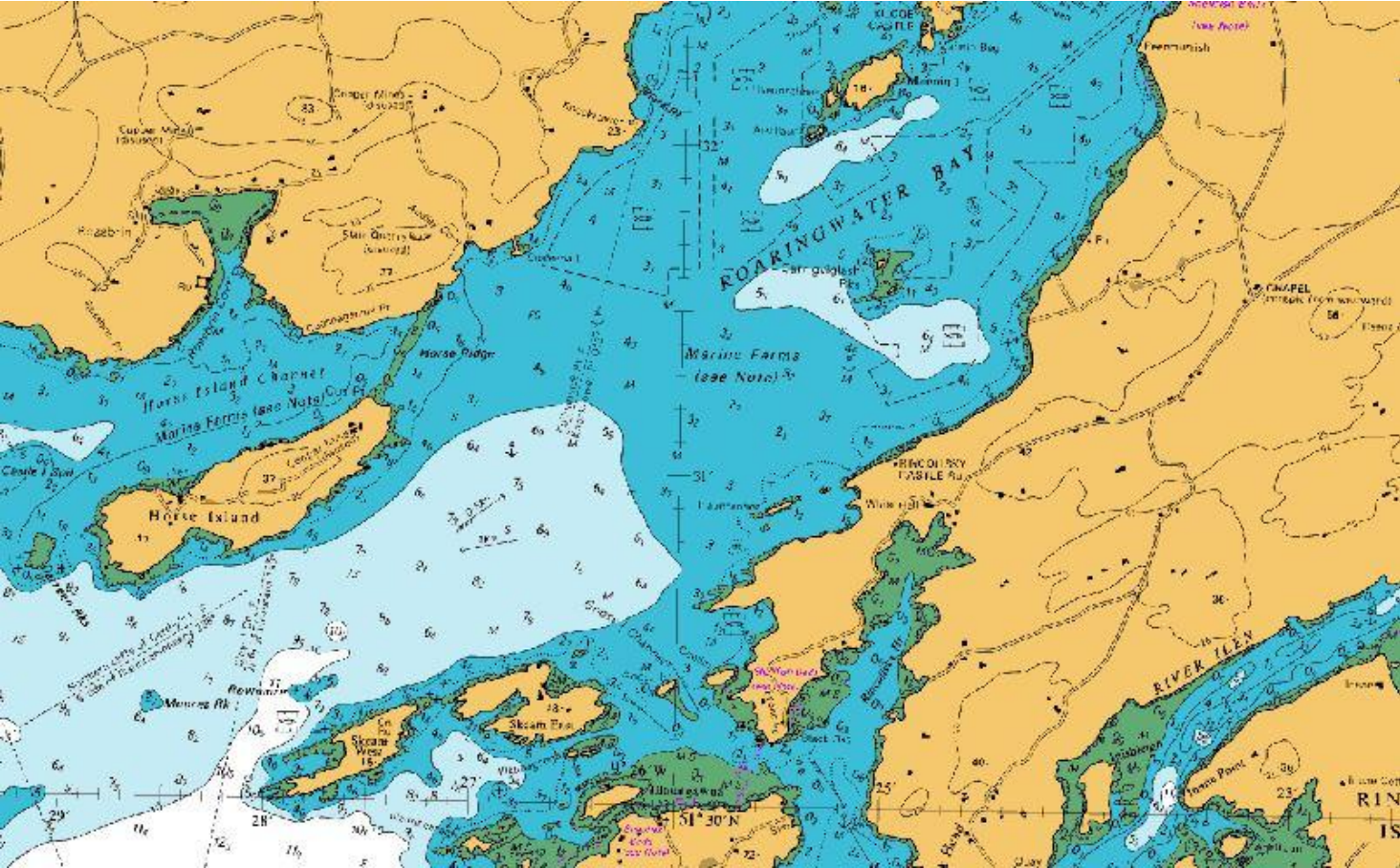
Location of Fishing: Roaringwater Bay and the Special Area of Conservation



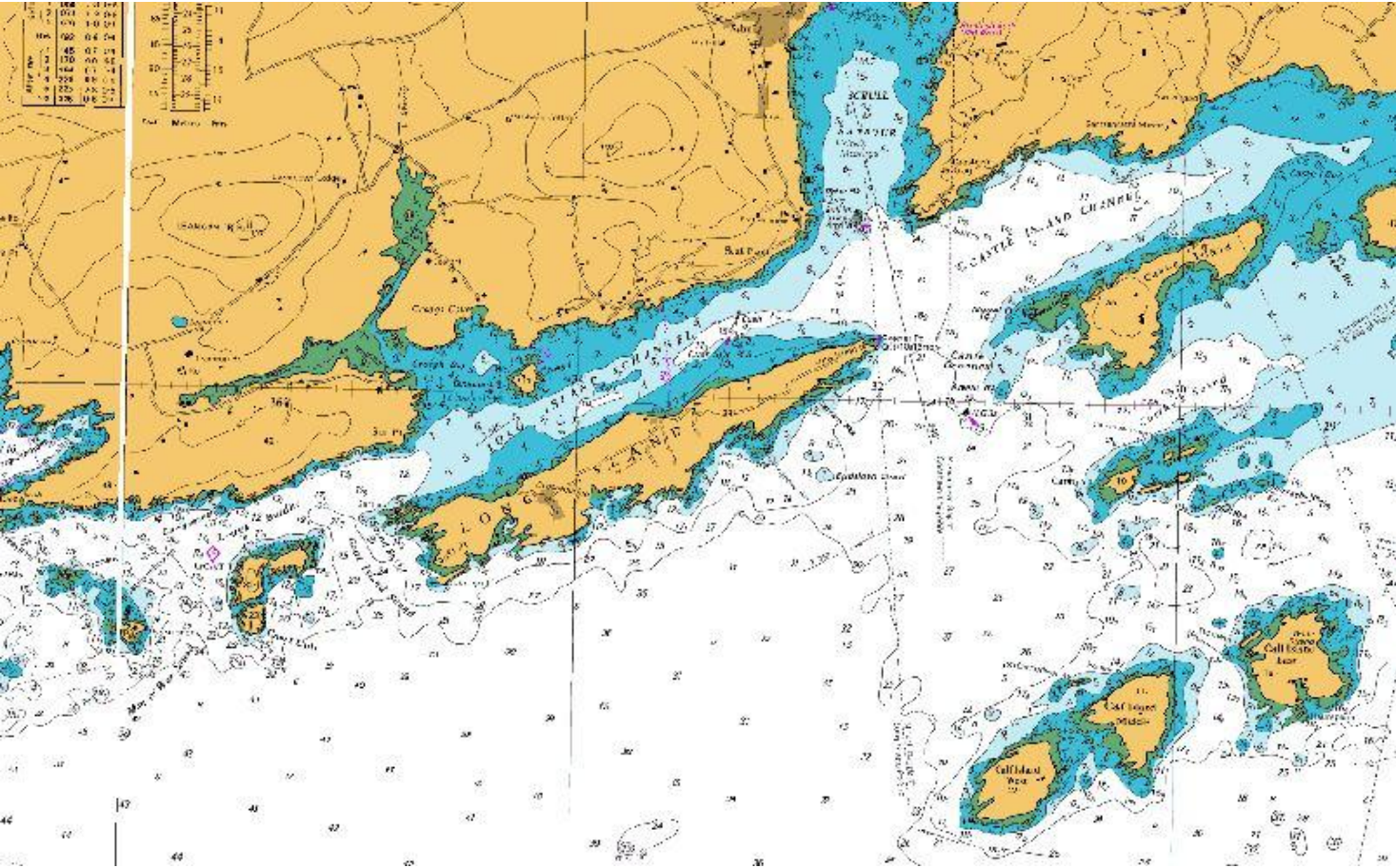
Notes on location:

1. Be as precise as possible
2. Do not outline large undefined areas that 'join up' patches of ground.
3. The data will be used to quantify overlap of activity with particular habitats and species.

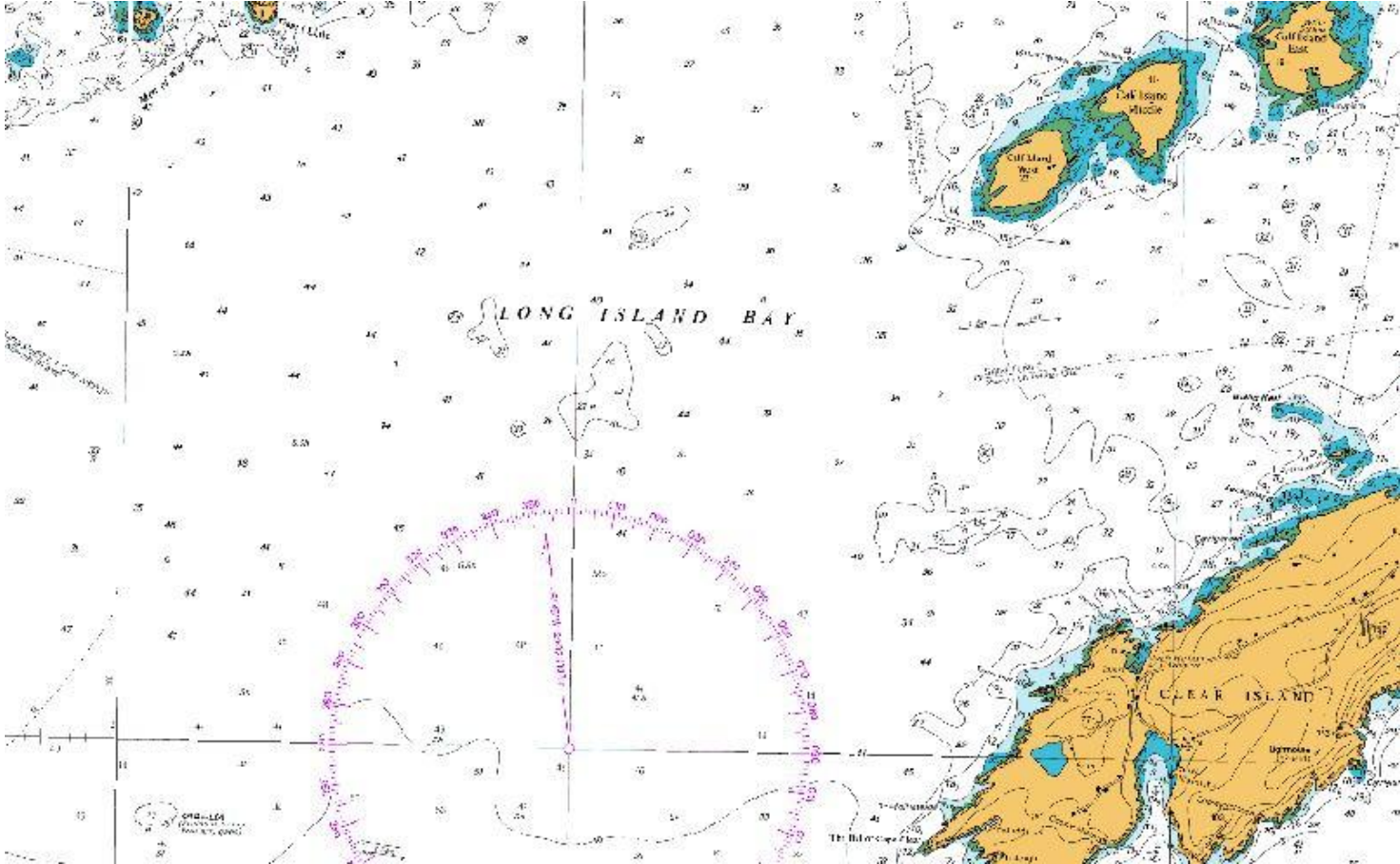
Location of fishing: North East Bay



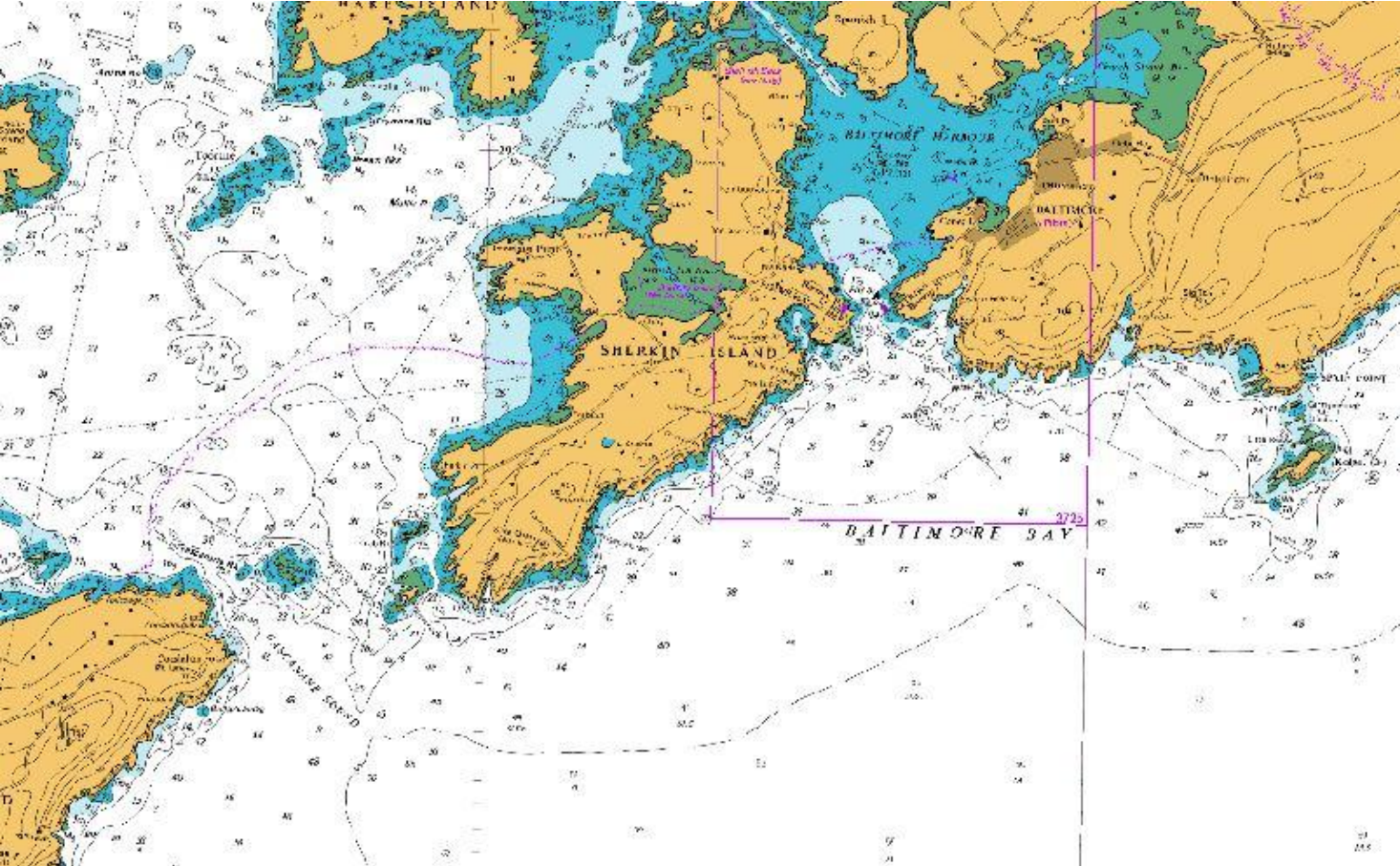
Location of Fishing: North West Bay



Location of Fishing: South West Bay



Location of Fishing: South East Bay



| Opinion on STATE ¹ (stocks) and TREND ² (stocks) | | STATE | | | TREND | | |
|--|--------------------------|-------|--------|-----|-----------|--------|-----------|
| | | High | Medium | Low | Improving | Stable | Declining |
| Gear | Target species | | | | | | |
| MOBILE | | | | | | | |
| Fixed tooth dredge | scallop | | | | | | |
| Oyster dredge | oyster | | | | | | |
| Hydraulic dredge | cockle, clam | | | | | | |
| Bottom otter trawl | mixed demersal | | | | | | |
| Single mid-water trawl | Herring, sprat, mackerel | | | | | | |
| Pair mid-water trawl | Herring, sprat, mackerel | | | | | | |
| STATIC | | | | | | | |
| Set Gill Nets | Pollack | | | | | | |
| Tangle Nets | Crays | | | | | | |
| Trammel Nets | Bait | | | | | | |
| Shrimp Pots | shrimp | | | | | | |
| Soft eye creels | crabs, lobsters | | | | | | |
| Top entrance pots | crabs, lobsters | | | | | | |
| HOOKS and LINES | | | | | | | |
| Mechanised Jiggers | whitefish | | | | | | |
| Bottom set Long Lines | demersal | | | | | | |
| Drifting Longlines | | | | | | | |
| Trolling Lines | | | | | | | |
| LAND BASED | | | | | | | |
| Hand Gathering | | | | | | | |
| Digging / Raking | | | | | | | |

Note: This information is not directly relevant to assessment of activity. However if mitigations are required then it will be important to know how particular gears or fisheries are currently performing eg are stocks at risk irrespective of habitat considerations.

¹ State: current position compared to a historic reference

² Trend: over a given reference period what is the trend in each stock

| Opinion on issues limiting fishery performance (activity and/or income) | | Too many vessels | Too much gear | Too much fishing effort | Poor stocks | Limited markets | Poor market price | Fisheries regulations | Ground use conflicts | High costs of fishing | Interaction with seals | Other |
|---|--------------------------|------------------|---------------|-------------------------|-------------|-----------------|-------------------|-----------------------|----------------------|-----------------------|------------------------|-------|
| Gear | Target species | | | | | | | | | | | |
| MOBILE Gear | | | | | | | | | | | | |
| Fixed tooth dredge | scallop | | | | | | | | | | | |
| Oyster dredge | oyster | | | | | | | | | | | |
| Hydraulic dredge | cockle, clam | | | | | | | | | | | |
| Bottom otter trawl | mixed demersal | | | | | | | | | | | |
| Single mid-water trawl | herring, sprat, mackerel | | | | | | | | | | | |
| Pair mid-water trawl | herring, sprat, mackerel | | | | | | | | | | | |
| | | | | | | | | | | | | |
| STATIC GEAR | | | | | | | | | | | | |
| Set Gill Nets | Pollock | | | | | | | | | | | |
| Tangle Nets | Crays | | | | | | | | | | | |
| Trammel Nets | Bait | | | | | | | | | | | |
| Shrimp Pots | shrimp | | | | | | | | | | | |
| Soft eye creels | crabs, lobsters | | | | | | | | | | | |
| Top entrance pots | crabs, lobsters | | | | | | | | | | | |
| | | | | | | | | | | | | |
| HOOKS and LINES | | | | | | | | | | | | |
| Mechanised Jiggers | whitefish | | | | | | | | | | | |
| Bottom set Long Lines | demersal | | | | | | | | | | | |
| Drifting Longlines | | | | | | | | | | | | |
| Trolling Lines | | | | | | | | | | | | |
| | | | | | | | | | | | | |
| LAND BASED | | | | | | | | | | | | |
| Hand Gathering | | | | | | | | | | | | |
| Digging / Raking | | | | | | | | | | | | |

Note: This information is not directly relevant to assessment of activity. However if mitigations are required then it will be important to have a census of opinions on what the particular issues are with each fishery and therefore the degree to which certain mitigation proposals might be supported.

| Do you participate in stock conservation, enhancement and management over and above legal requirements | | Re-seeding | Local catch limits | V-notching | Seasonal closures | Are you involved in aquaculture | Other |
|--|--------------------------|------------|--------------------|------------|-------------------|---------------------------------|-------|
| Gear | Target species | | | | | | |
| MOBILE | | | | | | | |
| Fixed tooth dredge | scallop | | | | | | |
| Oyster dredge | oyster | | | | | | |
| Hydraulic dredge | cockle, clam | | | | | | |
| Bottom otter trawl | mixed demersal | | | | | | |
| Single mid-water trawl | herring, sprat, mackerel | | | | | | |
| Pair mid-water trawl | herring, sprat, mackerel | | | | | | |
| | | | | | | | |
| STATIC | | | | | | | |
| Set Gill Nets | Pollock | | | | | | |
| Tangle Nets | Crays | | | | | | |
| Trammel Nets | Bait | | | | | | |
| Shrimp Pots | shrimp | | | | | | |
| Soft eye creels | crabs, lobsters | | | | | | |
| Top entrance pots | crabs, lobsters | | | | | | |
| | | | | | | | |
| HOOKS and LINES | | | | | | | |
| Mechanised Jiggers | whitefish | | | | | | |
| Bottom set Long Lines | demersal | | | | | | |
| Drifting Longlines | | | | | | | |
| Trolling Lines | | | | | | | |
| | | | | | | | |
| LAND BASED | | | | | | | |
| Hand Gathering | | | | | | | |
| Digging / Raking | | | | | | | |

Roaringwater Bay Sediment Map from scientific survey: Do you have any comments ?

